

13.9 m 2021 Lagoon 450S

€528,000 Tax: Not Paid

Dalmatia, Croatia



Boat Details

Make:	Lagoon	Class:	Catamaran	Crew Cabins:	2
Model:	450S	Hull Material:	Fiberglass	Guest Heads:	4
Year:	2021	Drive Type:	Stern Drive	Fuel Type:	Diesel
Length:	13 m 96 cm	Beam:	7 m 84 cm	Max Speed:	8 kn
Price:	€528,000	Boat Location:	Dalmatia, Croatia		
Condition:	Used	Guest Cabins:	4		

Ivan Novak | Marine One Boats

K.A.Stepinca 88, Trogir, Croatia

Tel: +385 99 769 0601

marineone.boats@gmail.com

<https://www.yachtbrokerage.eu/>



Description

-4+2 cabin catamaran **Lagoon 450 S (code 916)** was built in 2021 and it is docked in Croatia, available for takeover immediately

-RADAR/ HEATING

-Catamaran can accommodate up to 12 people in 2 single cabins, 4 double cabins and a saloon with 2 extra beds.

-Catamaran offers **4 toilets with a shower**.

-Vessel equipment features **classic mainsail, electric winches, salon GPS plotter, bimini and outside GPS plotter**. It also boasts **a heating, audio system, outside speakers, flybridge and inside speakers**. The fully-equipped galley includes **a coffee machine, fridge, oven, cooker and sink**.

-If you would like more information for this boat, please contact us by email, Whatsapp message or a call. The price shown is with our commission included. Description and pricing is subject to change without prior notice.

-The Company offers the details of this vessel in good faith but cannot guarantee or warrant the accuracy of this information nor warrant the condition of the vessel. A buyer should instruct his agents, or his surveyors, to investigate such details as the buyer desires validated. This vessel is offered subject to prior sale, price change, or withdrawal without notice.

Information & Features

2021 Yanmar 4JH57 SD (Engine 1)

Engine Type:	Inboard	Drive Type:	Stern Drive
Fuel Type:	Diesel	Power:	56.32 hp
Engine Hours:	1958	Propeller Type:	3 Blade

2021 Yanmar 4JH57 SD (Engine 2)

Engine Type:	Inboard	Drive Type:	Stern Drive
Fuel Type:	Diesel	Power:	56.32 hp
Engine Hours:	1958	Propeller Type:	3 Blade

Dimensions

LOA:	13 m 96 cm
Beam:	7 m 84 cm

Speed

Cruising Speed:	6 kn
Max Speed:	8 kn

Tanks

Fuel:	1,050 l
Fresh Water:	800 l

Accommodations

Guest Cabins:	4
Crew Cabins:	2
Guest Heads:	4

Covers

- Bimini Top: on helm station
- Lazy Bag

Electrical Equipment

- Inverter
- Shore Power Inlet: 220 V

Electronics

- Autopilot
- CD Player
- Cockpit Speakers
- Compass
- Depthsounder
- Flat Screen TV: LCD TV
- GPS
- Log-Speedometer
- Plotter
- Radar
- Radio
- TV Set
- VHF
- Wind Speed and Direction

Inside Equipment

- Battery Charger
- Deep Freezer
- Electric Bilge Pump
- Electric Head: x3
- Heating
- Hot Water
- Oven
- Refrigerator

Outside Equipment/Extras

- Cockpit Cushions
- Cockpit Table
- Davit(s)
- Gangway
- Liferaft
- Outboard Engine Brackets
- Radar Reflector
- Swimming Ladder
- Teak Cockpit
- Tender

Rigging

- Electric Winch
- Steering Wheel

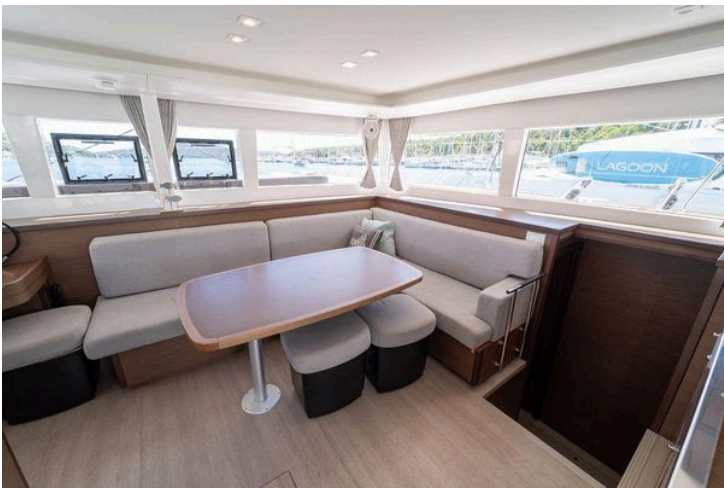
Sails

- Fully Battened Mainsail
- Furling Genoa
- Gennaker/Cruising Spinnaker

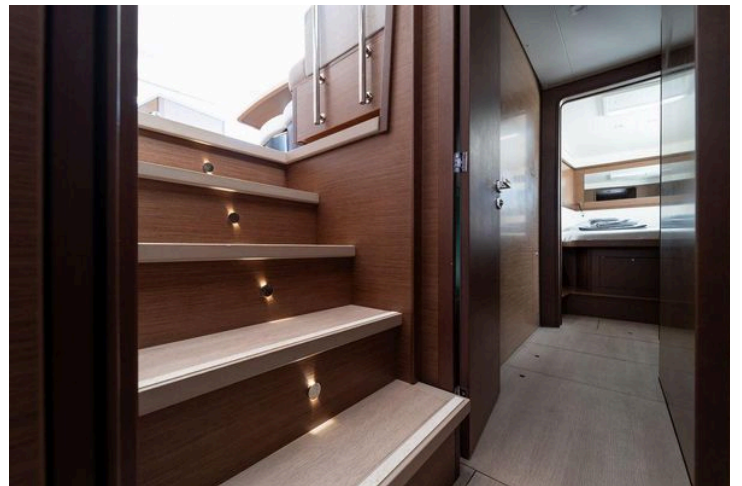
Disclaimer

The Company offers the details of this vessel in good faith but cannot guarantee or warrant the accuracy of this information nor warrant the condition of the vessel. A buyer should instruct his agents, or his surveyors, to investigate such details as the buyer desires validated. This vessel is offered subject to prior sale, price change, or withdrawal without notice.













Version 4 cabines / 4 cabin version